



Ask ONS: Oncology Nurses Address your Clinical Questions

ONS Oncology Clinical Specialists

Meet the Clinical Leadership at ONS



Erica Fischer-Carlidge
**DNP, RN, AOCNS[®],
EBP(CH)**
(@EricaCarlidge)
New Jersey
Chief Clinical Officer



**Katie Wiley, MSN,
RN, AOCNS[®]**
(@ONSKWiley)
New Jersey
**Director of Oncology
Nursing Practice**



Oncology Clinical Specialists



Kris LeFebvre,
DNP, RN, AOCN®
(@ONSLeFebvreKris)
Massachusetts



Chelsea Backler,
MSN, APRN,
AGCNS-BC,
AOCNS®, VA-BC
(@ONS_Chelsea)
Wisconsin



Erin Dickman,
MS, RN, OCN®
(@ONSErin)
Ohio



Jaime Weimer,
MSN, RN,
AGCNS-BC,
AOCNS®
(@ONSJWeimer)
Indiana



Kim Rivera,
DNP, RN-BC,
OCN®, NPD-BC
(@ONS_Kimberly)
New Hampshire



Oncology Clinical Specialists



Britney Starr,
BSN, RN, OCN®
Colorado



Madeline Johnston,
MSN, RN, OCN®
Michigan



How to ask ONS clinical questions

- Submit questions via the website <https://clinicalhelp.ons.org/>
 - Found in the “Contact Us” link at the bottom of ONS.org homepage
 - ONS Member-only benefit



Oncology Nursing Society
125 Enterprise Drive
Pittsburgh, PA 15275
866-257-4ONS (866-257-4667)

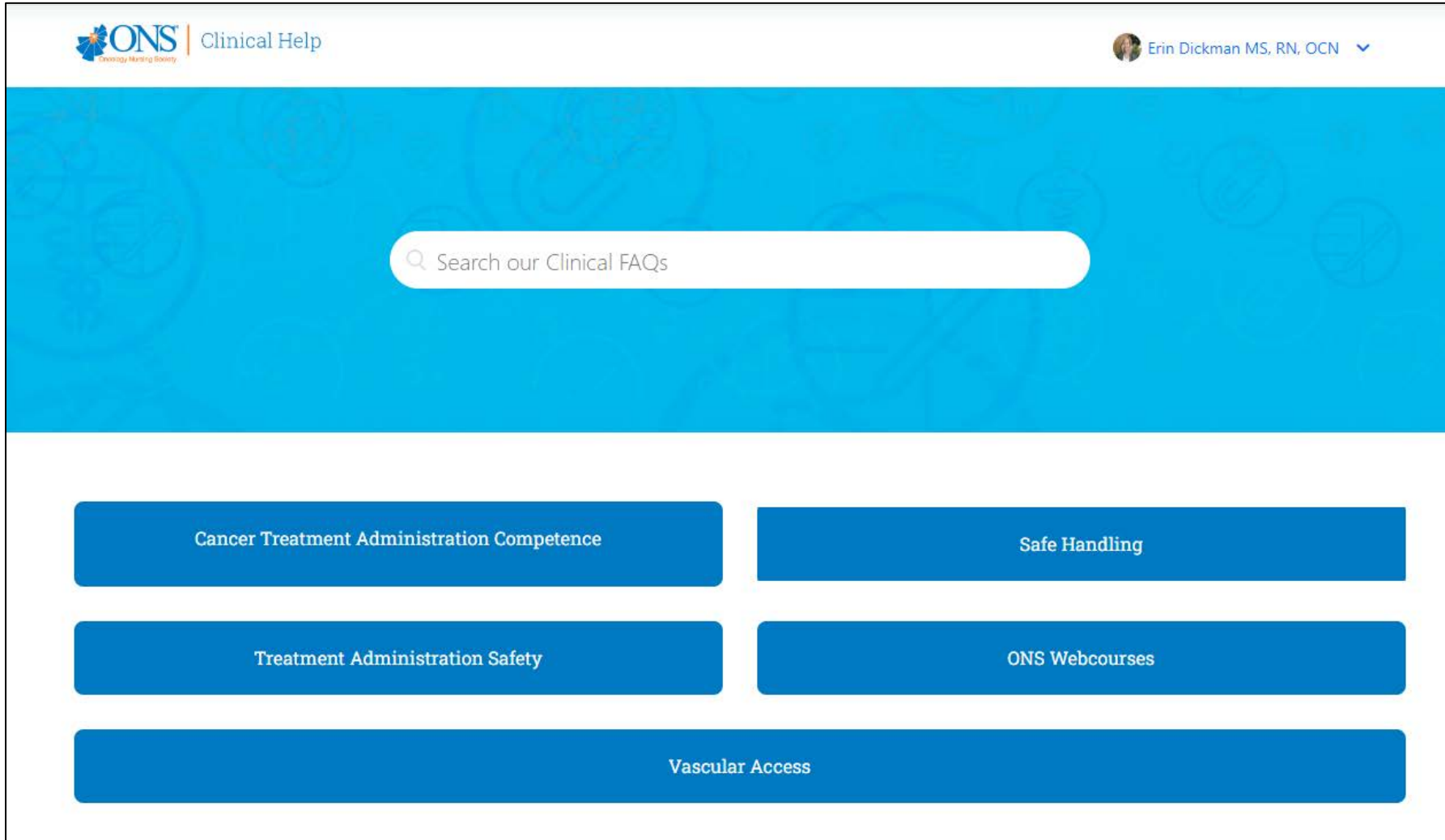
Contact Us

CLINICAL INQUIRIES

If you are unable to find answers to your clinical questions through our online ONS resources and you are an ONS member, reach out to our experienced Oncology Nursing Specialists at our Clinical Helpdesk.

We'll get back to you within two business days. Reach out to our experts at <https://clinicalhelp.ons.org>

Clinical FAQs



The screenshot shows the 'Clinical Help' section of the ONS (Oncology Nursing Society) website. At the top left is the ONS logo with the tagline 'Oncology Nursing Society'. To its right is the text 'Clinical Help'. On the top right, there is a user profile for 'Erin Dickman MS, RN, OCN' with a dropdown arrow. The main content area has a blue background with a faint pattern of medical icons. A white search bar with a magnifying glass icon contains the text 'Search our Clinical FAQs'. Below the search bar, there are five blue rectangular buttons arranged in three rows: 'Cancer Treatment Administration Competence' and 'Safe Handling' in the first row; 'Treatment Administration Safety' and 'ONS Webcourses' in the second row; and 'Vascular Access' as a single wide button in the third row.

ONS | Clinical Help

Erin Dickman MS, RN, OCN

Search our Clinical FAQs

Cancer Treatment Administration Competence

Safe Handling

Treatment Administration Safety

ONS Webcourses

Vascular Access

ONS Communities

communities.ons.org

- Reach out and connect with colleagues across the country
- Apply for volunteer opportunities



Learning Libraries

ons.org/learning-libraries/

- Oncologic Emergencies
- Breast Cancer
- Genomics and Precision Oncology
- Huddle Cards
- Safe Handling of Hazardous Drugs
- Care of the Older Adult with Cancer
- Career Development
- Oncology Nursing Podcast
- Colorectal Cancer
- Tobacco, E-Cigarettes and Vaping
- Evidence-Based Practice
- Immuno-Oncology
- Leadership
- Nurse Navigation
- Nurse Well-Being
- Nutrition
- ONS Information Regarding the Coronavirus (COVID-19)
- Pain Management
- Spanish Resource
- Cancer of the Genitourinary Tract
- Survivorship

Oncologic Emergencies Learning Library



The ONS Clinical Specialists have compiled a comprehensive list of resources about oncologic emergencies for your reference.

Clinical Practice Resources

+

Case Studies

+

Podcasts

+

Articles

+

Courses

+

Books


+

Videos

+

Huddle Cards

- One page, "bite-size" education on relevant topics to oncology nurses
- Perfect for quickly reviewing during shift huddles or staff meetings
- New topics being added regularly

**HUDDLE CARD**
IMMUNOTHERAPY

Approach
Immunotherapy harnesses the immune system's innate ability to recognize and destroy cancer cells. For example, certain cancers avoid destruction by the immune system by having a surface that turns off immune cell function. Immunotherapy can block these proteins, giving the immune system a chance to respond. Some types of immunotherapies have the potential to keep the immune system active so if the tumor is dormant for a period or the patient relapses, the immune system knows how to respond.

Examples
Checkpoint inhibitors, monoclonal antibodies, adoptive cell transfer

Benefits

- Immunologic memory can prevent recurrence
- May have fewer acute, dose-dependent side effects, compared to standard chemotherapy
- May be used in combination with other therapies
- Often has durable responses

Limitations

- Requires a working immune system
- May take longer to see effects
- Fewer drugs available and less indication

Treatment Modalities

Oncologic Emergencies

Diversity, Equity, and Inclusion

Administration Considerations

Genomics Resources

ons.org/learning-libraries/precision-oncology



Biomarker Testing

Biomarker testing can identify germline and/or somatic variants. It is the use of laboratory tests to measure genes, proteins, and other substances (biomarkers) found in tissue, blood, or other body fluids.

SOMATIC VARIANT

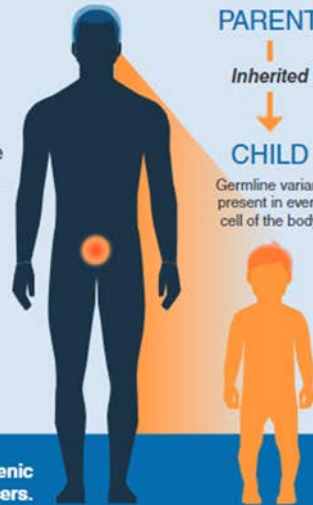
A somatic cell is any cell of the body except sperm and egg cells. Somatic variants can affect the individual but are not passed on to offspring. For example, a somatic driver variant in lung cancer.



Somatic driver variants are the most common cause of cancer.

GERMLINE VARIANT

A germline variant (alteration) occurs in a sperm cell or an egg cell. Germline variants can be passed on to offspring.



Germline pathogenic variants or likely pathogenic variants account for about 5%–10% of all cancers.

Genomics and Precision Oncology Learning Library



The ONS Genomics Advisory Board members have compiled a comprehensive list of learning resources for your quick reference!

Patient Education- New!	+
Clinical Practice Resources- New!	+
Learning Activities	+
Genomic "Glad You Asked" Video Series	+
ONS Articles	+
ONS Genomics Taxonomy	+
Books	+
Podcasts	+
Genomics External Resources	+
Learn More About the ONS Genomics Advisory Board	+

Biomarker Database

Biomarkers.ons.org

Curated for oncology nurses by oncology nurses to bring precision oncology and the most recent biomarker advances to the point of care.

The screenshot displays the Biomarker Database website interface. At the top, there is a navigation bar with links for 'Biomarker Database', 'Biomarkers', 'Cancer Types', and 'About'. A welcome message states: 'Welcome! Let's learn more about biomarkers. Curated for oncology nurses by oncology nurses to bring precision oncology and the most recent biomarker advances to the point of care. Bookmark this page as new cancer types and biomarkers will be added frequently.' Below this is a 'Learn More' button.

The main content area features a search bar with the placeholder text 'Search by biomarker, cancer type, or targeted therapy.' and a search input field. To the right of the search bar, it indicates 'Showing 1-10 of 103 Results'. The search results are displayed in a list format. The first result is for 'ALK' (Anaplastic Lymphoma Kinase) associated with 'Non-Small Cell Lung Cancer'. It includes a description: 'ALK (anaplastic lymphoma kinase) gene rearrangement is a driver variant and is involved with chromosomal rearrangement. It activates RAS-MEK-ERK, JAK-STAT3, and PI3K-AKT pathways, which are central to proliferation and growth [1].' and a link to 'click here' to see all biomarkers associated with Non-Small Cell Lung Cancer. The result is updated as of 05/17/2022.

The second result is for 'AFP' (Alpha-Fetoprotein) associated with 'Gastroesophageal Malignancies' and 'Cancer SubTypes: Gastric Adenocarcinoma'. It includes a description: 'AFP is a prognostic and monitoring biomarker. Increased AFP levels can represent progression of disease and poor prognosis.' and a link to 'click here' to see all biomarkers associated with Gastroesophageal Malignancies. The result is updated as of 05/16/2022.

Each result has a 'Show Details >>' link. Below the search results, there are sections for 'Implications for Patient Care' and 'Targeted Therapies'. The 'Implications for Patient Care' section for ALK states: 'The ALK biomarker is predictive. The presence of an ALK gene rearrangement strongly predicts potential response to ALK TKIs [2].'. The 'Targeted Therapies' section for ALK lists: 'Alectinib, brigatinib, lorlatinib, and all preferred first-line treatments for ALK and NSCLC are based on superiority over crizotinib in clinical trials. NCCN-recommended first-line therapies: Alectinib (Alecensa®) ALK Inhibitor Indicated for the treatment of patients with ALK-positive metastatic NSCLC as detected by an FDA-approved test [3]'. There is also a link to 'Patient Education'.

Oral Anticancer Medication Toolkit



- Pre-treatment assessment
- Patient education
- Monitoring and Follow-Up
- Treatment Calendar
- Wallet Cards



Safe Handling

- Learning Library
- Safe Handling Q&As from ONS & HOPA
- Safe Handling Basics Course (free for members!)
- Position statement

Safe Handling of Hazardous Drugs Learning Library



SAFE HANDLING Q&A GOWNS FOR HAZARDOUS DRUG ADMINISTRATION

BY MARTHA DOLOVICH, PhD, RN, C-SETH EISENBERG, RN, OCNE, BMTONE

Ensuring Healthcare Worker Safety When Handling Hazardous Drugs

Joint Position Statement from the Oncology Nursing Society and the Hematology/Oncology Pharmacy Association

Hazardous drugs (HDs) are chemicals that demonstrate one or more of the following characteristics: carcinogenicity, genotoxicity, teratogenicity, reproductive toxicity, or organ toxicity. In addition, newer drugs with a structural or toxicity profile that mimics an agent known to be hazardous by one of the aforementioned criteria should also be treated as HDs (National Institute for Occupational Safety and Health [NIOSH] 2016). As such, handling activities require health care workers (HCWs) and management to

Oral Chemo/IV Chemo Education Sheets



PASSION FOR PATIENTS
NCODA.ORG



<https://www.oralchemoedsheets.com>



<https://www.ivcanceredsheets.com>

Drug Reference Sheets

<https://voice.ons.org/topic/drug-reference-sheet>



NEWS, VIEWS, AND ADVOCACY FROM THE ONCOLOGY NURSING SOCIETY

ONS VOICE

News & Views Advocacy Stories

Topic
Drug Reference Sheet

U.S. FOOD AND DRUG ADMINISTRATION (FDA)

Oncology Drug Reference Sheet: Pemigatinib

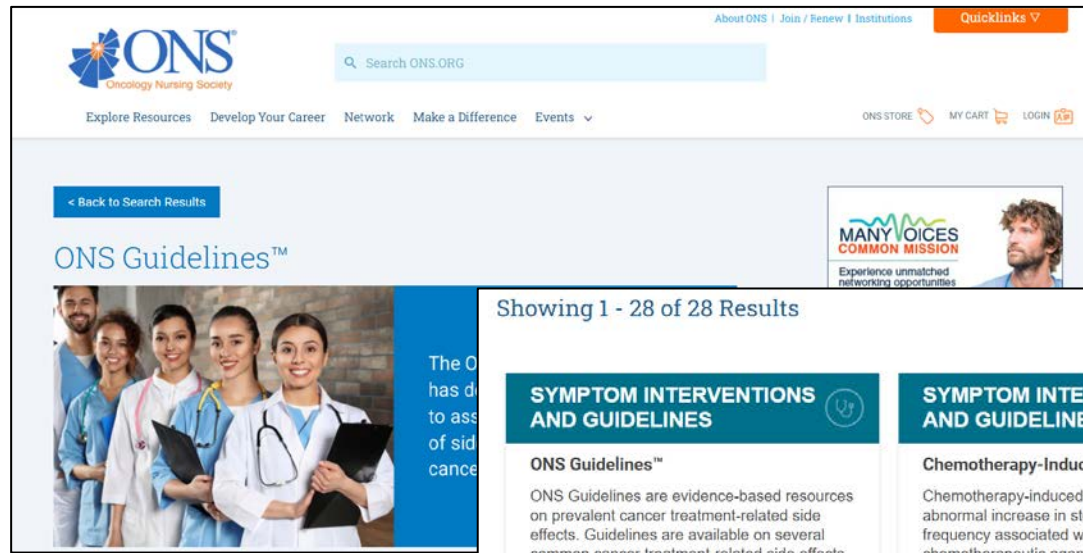
When the U.S. Food and Drug Administration (FDA) granted pemigatinib (Pemazyre®) a new indication in August 2022, it became the first targeted therapy approved for treatment of patients with relapsed or refractory myeloid or lymphoid neoplasms (M/LNs) with *fibroblast*

Trending Topics

- RESEARCH
- TREATMENTS
- SAFETY
- COVID-19
- DRUG REFERENCE SHEET



Symptom Intervention & Guidelines



ADVANCE PRINT EXCLUSIVE

ONS Guidelines™ to Support Patient Adherence to Oral Anticancer Medications

er, PharmD, BCOP, Benyam Muluneh, PharmD, BCOP, CPP,
I, OCN®, Mary K. Anderson, BSN, RN, OCN®,
Ryan K. DasGupta, PharmD, BCOP, Jennifer Elliott,
-BC, Michelle Karlin, DNP, AOCNP®, FNP-BC,
PS, BCOP, Victoria K. Marshall, PhD, RN,
D, BCPS, BCOP, Maegan Molnar, LCSW,
FAAN, Janelle Tipton, DNP, APRN-CNS, AOCN®,
N®, Kristine B. LeFebvre, MSN, RN, NPd-BC, AOCN®,
aseem, MPH, and Rebecca L. Morgan, PhD, MPH

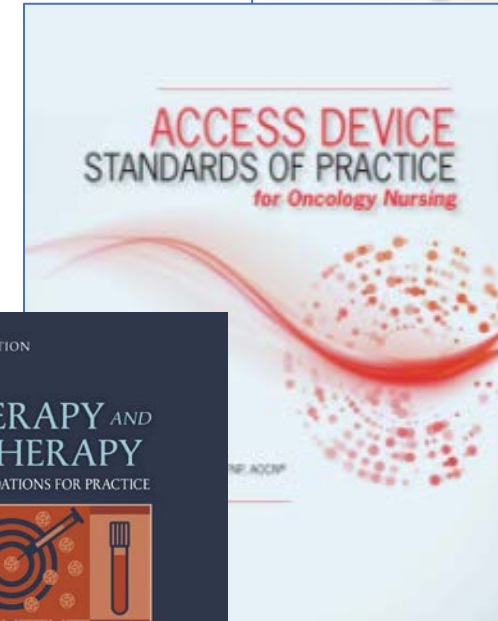
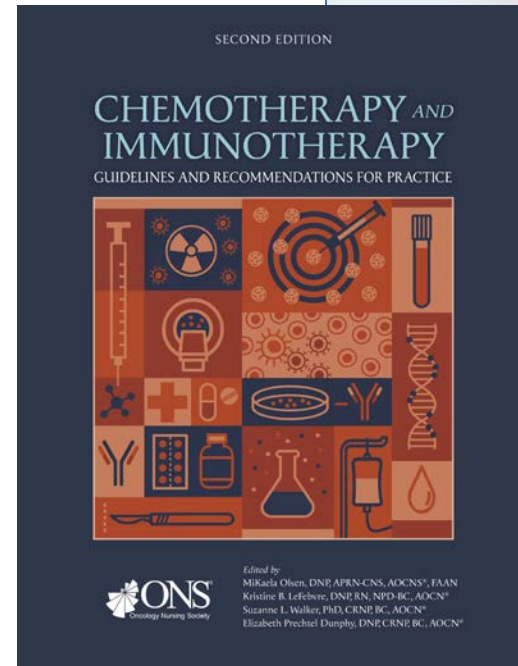
Showing 1 - 28 of 28 Results

Items Per Page: 50 Sort By: Most Recent

SYMPTOM INTERVENTIONS AND GUIDELINES	SYMPTOM INTERVENTIONS AND GUIDELINES	SYMPTOM INTERVENTIONS AND GUIDELINES
ONS Guidelines™ ONS Guidelines are evidence-based resources on prevalent cancer treatment-related side effects. Guidelines are available on several common cancer treatment-related side effects. ... Read Now >>	Chemotherapy-Induced Diarrhea Chemotherapy-induced diarrhea is the abnormal increase in stool liquidity and frequency associated with the administration of chemotherapeutic agents. Read Now >>	Skin Toxicities A number of different types of cutaneous reactions that affect the skin, hair, and nails can occur with cancer treatment. Read Now >>
SYMPTOM INTERVENTIONS AND GUIDELINES	SYMPTOM INTERVENTIONS AND GUIDELINES	SYMPTOM INTERVENTIONS AND GUIDELINES
Radiodermatitis Radiodermatitis is the integumentary system's response to exposure to ionizing radiation, which can range from erythematous rash to desquamation and necrosis.	Prevention of Infection: Transplant Patients undergoing transplantation are at high risk for infection with a variety of pathogens at multiple phases in their care.	Prevention of Infection: General Patients receiving standard chemotherapy regimens for solid tumors are at lower risk for development of febrile neutropenia and infection than patients who undergo b...

Tried and True Resources

- Chemotherapy/Immunotherapy Guidelines (New print edition May 2023)
- Access Device Standards of Practice (New edition August 2023)
- Safe Handling of Hazardous Drugs (New edition end of 2023)
- Position statements



What questions do
YOU have?



Resources

- [Access Device Standards of Practice for Oncology Nursing](#)
- [Chemotherapy & Immunotherapy Guidelines and Recommendations for Practice](#)
- [Safe Handling of Hazardous Drugs](#)
- [Oncology Nursing: Scope and Standards of Practice](#)
- [ASCO/ONS Chemotherapy Administration Safety Standards](#)
- [ONS Communities](#)
- [Position Statement on the Education of Nurses who Administer Chemo, Targeted and Immunotherapy](#)



Resources (cont'd)

- [Licensing opportunities](#)
- [Huddle Card Library](#)
- [Oral Chemo Education Sheets](#)
- [IVE Drug Education Sheets](#)
- [Learning Libraries](#)
- [Oral Adherence Toolkit](#)
- [Nurse Wellbeing Learning Library](#)

